





ZOLLPACKHOF



# INTRODUCING THE ZOLLPACKHOF

The Zollpackhof, located across the Chancellery building, became Berlin's first restaurant destination as early as 1700. When it was re-opened in 2005, Berlin native and restaurateur Benjamin Groenewold gave back a piece of tradition to the capital. After long renovations from 2014 to 2016, in cooperation with Munich's Augustiner-Bräu, the historic complex now shines with new life. The overall architectural concept was based on old building plans from the turn of the century.

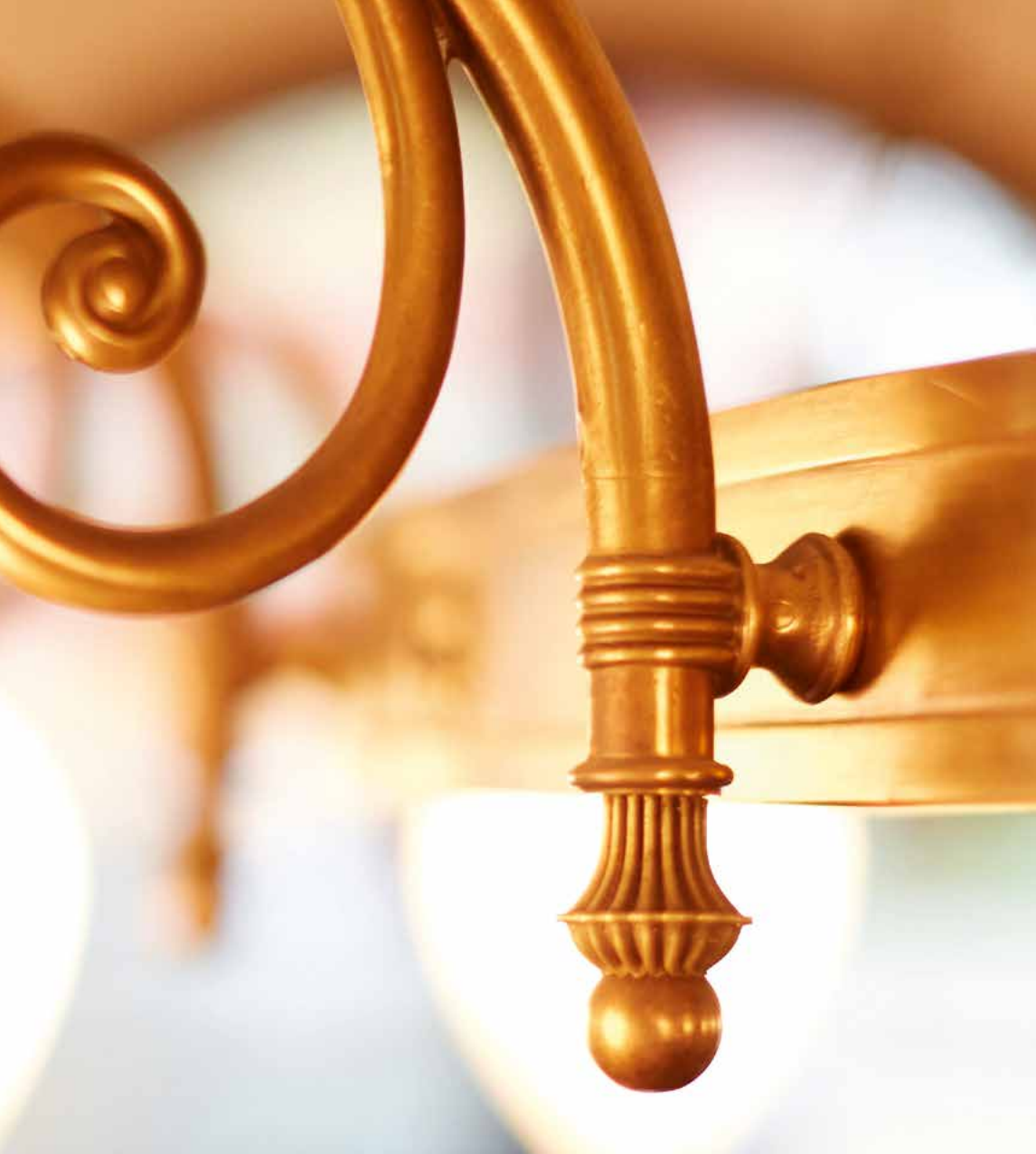
Along with the professionalism and friendliness of its servers, the restaurant's philosophy includes enthusiasm for Bavarian comfort.

The restaurant and its 360° round fireplace make up the cornerstone of the Zollpackhof. Here you can enjoy traditional, regionally influenced German and Austrian cuisine, as well as a broad selection of Bavarian beer specialties, from 10 am to midnight every day. Our new banquet hall **adjacent** to the restaurant, the Remise, also

shines. Together with the two terraces along the front windows, this area is particularly ideal for private parties or company events. Another **highlight** is the newly opened Augustiner cellar, with its original 19th-century foundation block walls. The rustic cellar fits up to 150 people, and can also be reserved for exclusive events. In the summertime the beer garden continues to offer a stunning view of the Spree and the Chancellery building. With its horse chestnut tree, more than 150 years old, it is one of the most beautiful beer gardens in the capital.

Centrally located by Berlin Central Station, surrounded by **an adjacent** park, the Zollpackhof offers its guests a unique place to relax.

Come pay a visit — the Zollpackhof warmly welcomes its guests!



# THE LOCATION

## THE FIRST SETTLERS

It all began on 8<sup>th</sup> of November 1685 with the “Edict of Potsdam”. The gruesomely persecuted Huguenots of France were given new lives in Prussia by Elector Friedrich Wilhelm. The incentives for settling in Prussia were religious tolerance, initial financial assistance, a 15-year period of tax exemption, and complete integration into society. This migration was attractive for both sides, as many migrants were highly qualified and brought with them their esprit and many culinary ideas. The only problem was the lack of space for the roughly 20,000 protestant refugees from France. The “Ait of Moabit”, a plot of land consisting of heather, damp fields and many trees on the northern shore of the Spree, and at the time located outside of Berlin’s gates, was suitable. One of the first settlers was Monsieur Menard. In 1698 Elector Friedrich III bestowed upon Menard a mountain for vineyard cultivation at the mouth of the Niederschoenhausen trench on the Spree. Yet the vineyard alone did not satisfy Menard, and so he founded an inn with a garden. The “Menardie” soon became a popular destination for the Huguenots in Berlin as well as Berlin society. Menard laid the foundation for what would become over 300 years of gastronomy history at the very location where the restaurant Zollpackhof is now situated.

# A PLACE WITH HISTORY

## THE HISTORY OF THE LAND

The history of the land is just as multi-faceted as the history of Prussia itself: in 1717, north of the street “Old Moabit”, a powder factory was constructed and relocated to Spandau 120 years later for safety reasons. A royal lumberyard was located on the former “powder field” in the meantime. Located in that same spot from 1811 to 1815 was Tichy’s Bathhouse, an open-air river pool for Berlin’s residents. Berlin’s first swimming club was founded here in 1840. When Lehrter Station opened up in the immediate proximity in 1871, the bathhouse of Berlin’s first rail connection had to move to Lehrte in Hanover. There was supposed to be room here for a new packing site as well as tax and customs offices. One of these buildings was called the “Spiritus-Hof” and was eventually used as a casino. Up until 1920 the area was still a popular destination. After the Second World War, both Lehrter Station and the vicinity of the packing site were largely destroyed, and only the casino was mostly undamaged. The ruins of the station were finally demolished, but the packing site still belonged to the customs administration. Some forwarding companies settled in this location, but otherwise the beautiful land slumbered in a deep sleep until the Berlin Wall fell.

## MORE RECENT HISTORY

After the fall of the Berlin Wall, the reunification, and the government’s relocation to Berlin, the traditional land on the Spree boomed. With trees that had been there for centuries, direct access to the riverside promenade, and a view of the Chancellery building and the Swiss embassy, the Zollpackhof impresses with its new charm. The restaurant is in the new heart of the city and some of Berlin’s most exciting sights are just a stone’s throw away, such as the federal Chancellery, Potsdamer Platz, the Brandenburg Gate, the Reichstag, the victory column, the zoo, and Bellevue Palace.

In cooperation with the Augustiner [Brauerei](#) in Munich, a traditional tavern formed with one of the city’s most beautiful beer gardens beneath old, shaded trees. Hearty Bavarian-Austrian cuisine awaits our guests inside. A modern, cosy tavern ambience with round fireplace and large, imposing chandeliers invite guests to relax.



# RESTAURANT ZOLLPACKHOF

## YOUR HOST

Since 2005, Benjamin Groenewold — born 1975 — has been the managing partner. He received his Bachelor's degree in Business Administration in London early on, and then obtained another degree in Real Estate Economics in Berlin. Groenewold enjoyed his first success in the world of gastronomy when he opened the restaurant and café Josty in the Sony Center on Potsdamer Platz.

## RESTAURANT & REMISE

A packing station for the newly constructed Lehrter Station was built on the 19th-century foundation walls in 1871, where the restaurant — the centrepiece of the Zollpackhof — is now located. The 360° round fireplace provides a special ambience during the cold winter

months. In the summer months the restaurant's large terraces invite guests to sit back. Enjoy a special view of the Spree and the Chancellery building. At any time of year we spoil our restaurant guests with culinary delicacies of original, regionally influenced German-Austrian cuisine. You will also find a rich selection of Bavarian specialty beers and exquisite wines on our menu.

The Remise — our carriage house, directly adjoining the restaurant — is available for special events. This banquet hall offers room for up to 100 guests and can be booked exclusively. The room includes rustic wooden beams from which cast-iron chandeliers are hanging, which enhance the room's atmosphere.





RESTAURANT

# AUGUSTINER CELLAR

The newly opened Augustiner cellar consists of two spacious guest rooms: the tavern with a copper bar and the adjacent public bar. Both rooms were renovated with loving attention to detail and were expanded with natural materials. The original 19th-century foundation walls have also been preserved. The walls of the vaulted cellar are adorned with photos of old Berlin, bearing testament to the capital's rich history.

The cellar offers sufficient space for events with a special character. Enjoy a unique atmosphere here, whether for a rustic meeting in the evening cosied up with a beer, or for company meals with colleagues or business partners. You are also able to book your own master brewer to tap a wooden barrel of "Augustiner Edelstoff". As another little treat for our guests, we also offer hearty snacks. For events you may select from the broad range of items in our buffet or menu.







J. & W.

Augustiner-  
Bräu München  
gegründet 1328

# HOW TO BOOK WITH US

The Zollpackhof is the ideal location for events of up to 500 people indoors and up to 2,000 outdoors. All guest rooms may be exclusively or partially reserved. We are happy to advise you on various event formats, including:

Conferences/meetings  
Evening events  
Company parties  
Press conferences  
Weddings  
and many more

## EXCLUSIVE USAGE

The exclusive usage of entire rooms or separable areas is always possible. The reservation cost depends on the respective area and time of use (weekday, season, etc.) and may always be requested over the phone or via e-mail.

## LIGHTING AND ENGINEERING

We are happy to provide a quote for the reservation of lighting and audio equipment, stages, and festival tents.

## PERFORMANCE FEE

We charge a flat rate of 75 euro for DJ or live appearances.

## RESERVATION

The regular option for an exclusive rental of our spaces is four weeks after the request date. When making your reservation we ask that you confirm in writing your acceptance of our general terms and conditions (stamp and signature) which you will receive via e-mail with the offer. After confirmation, a payment of more than 50 per cent of the expected total profits will be sent one month before the event.

We accompany you every step of the way from preparation to the realisation of your event.





TAVERN

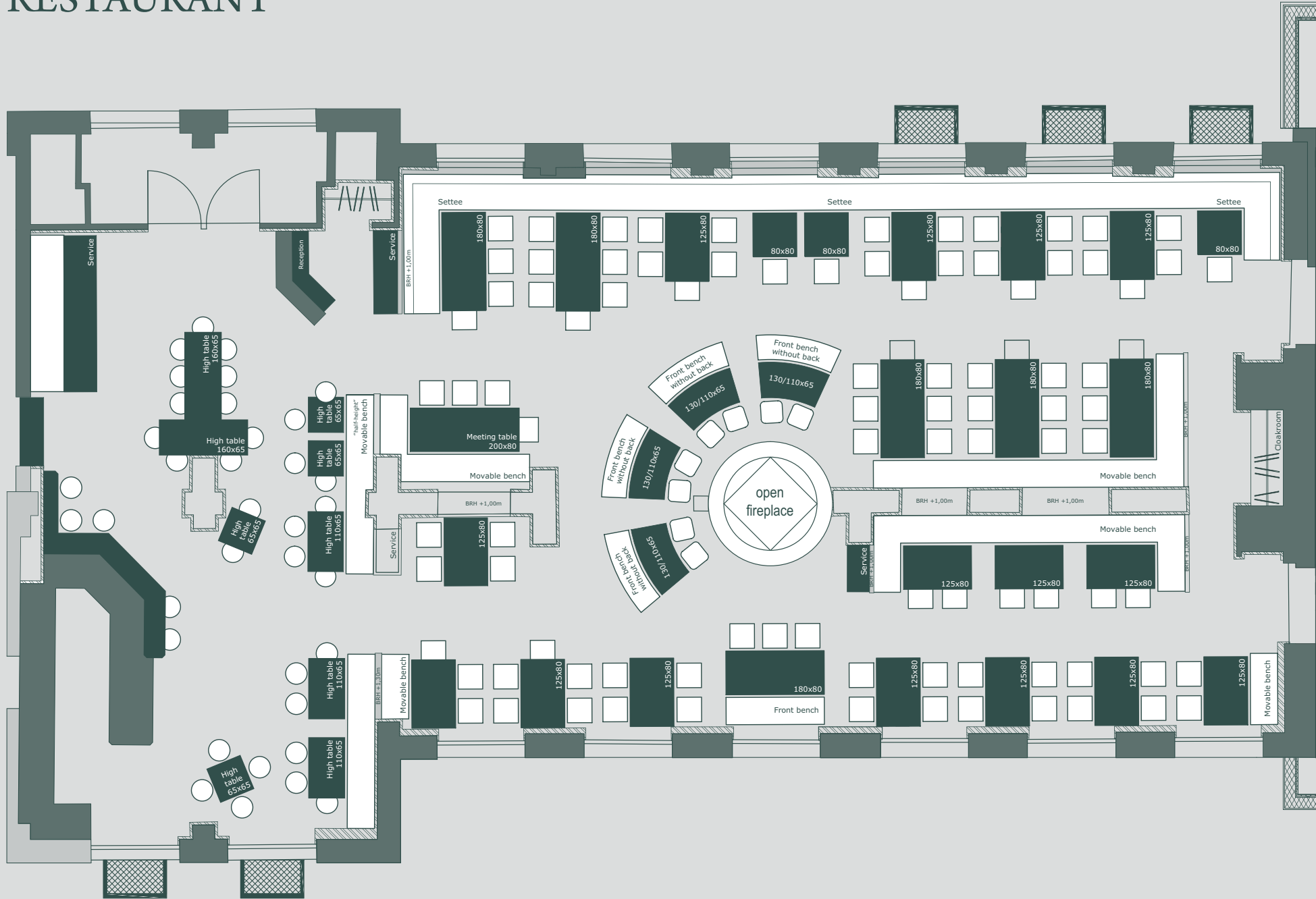
REMISE

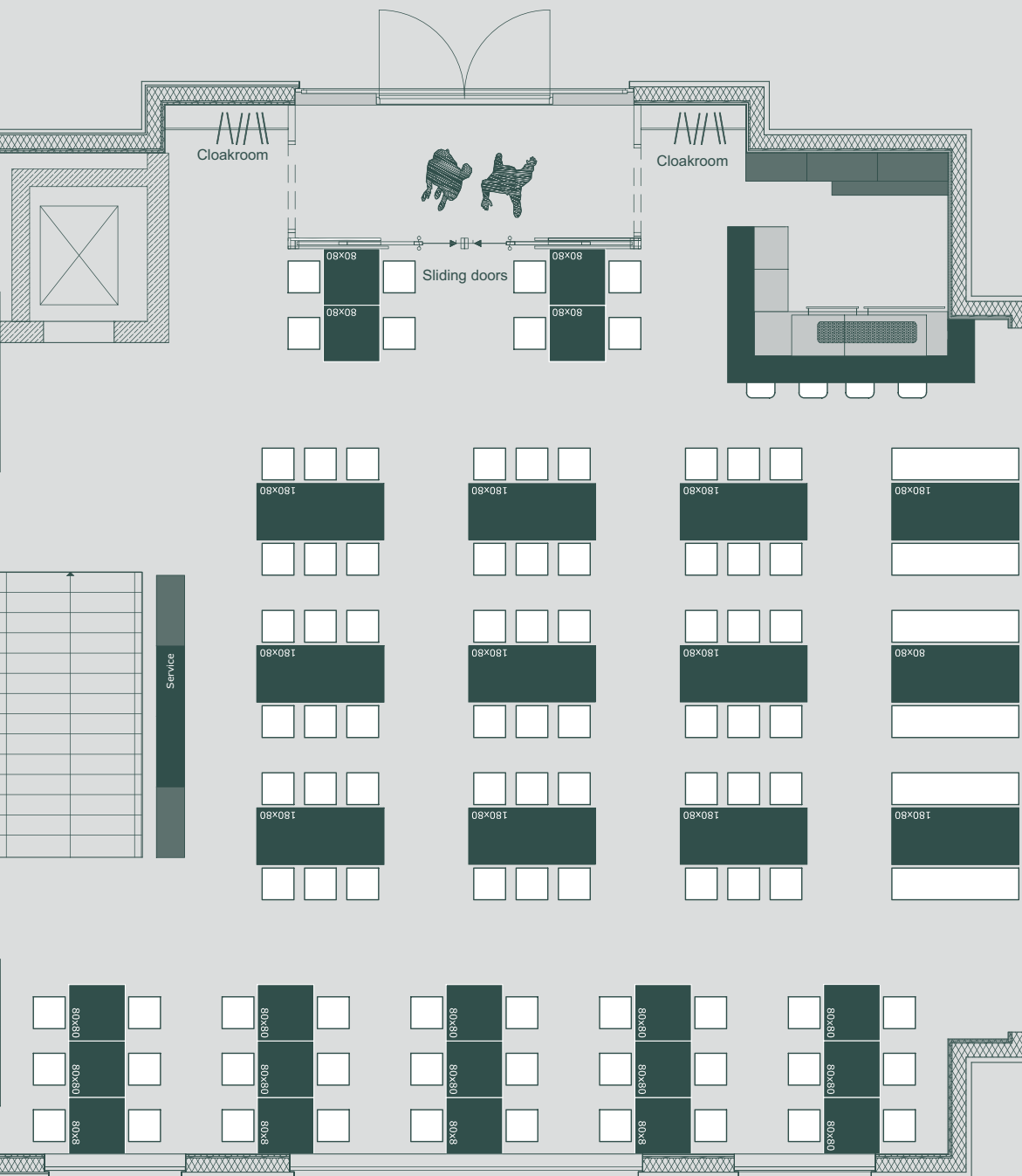


# SCHWEMME



# RESTAURANT





# REMISE

# CAPACITIES

## INDOORS

Restaurant with fireplace.....	120 PAX
Remise.....	100 PAX

## AUGUSTINER CELLAR

Tavern with copper bar.....	90 PAX
Schwemme.....	120 PAX

## OUTDOORS

Beer garden.....	2,000 PAX
Beer garden sunset.....	300 PAX

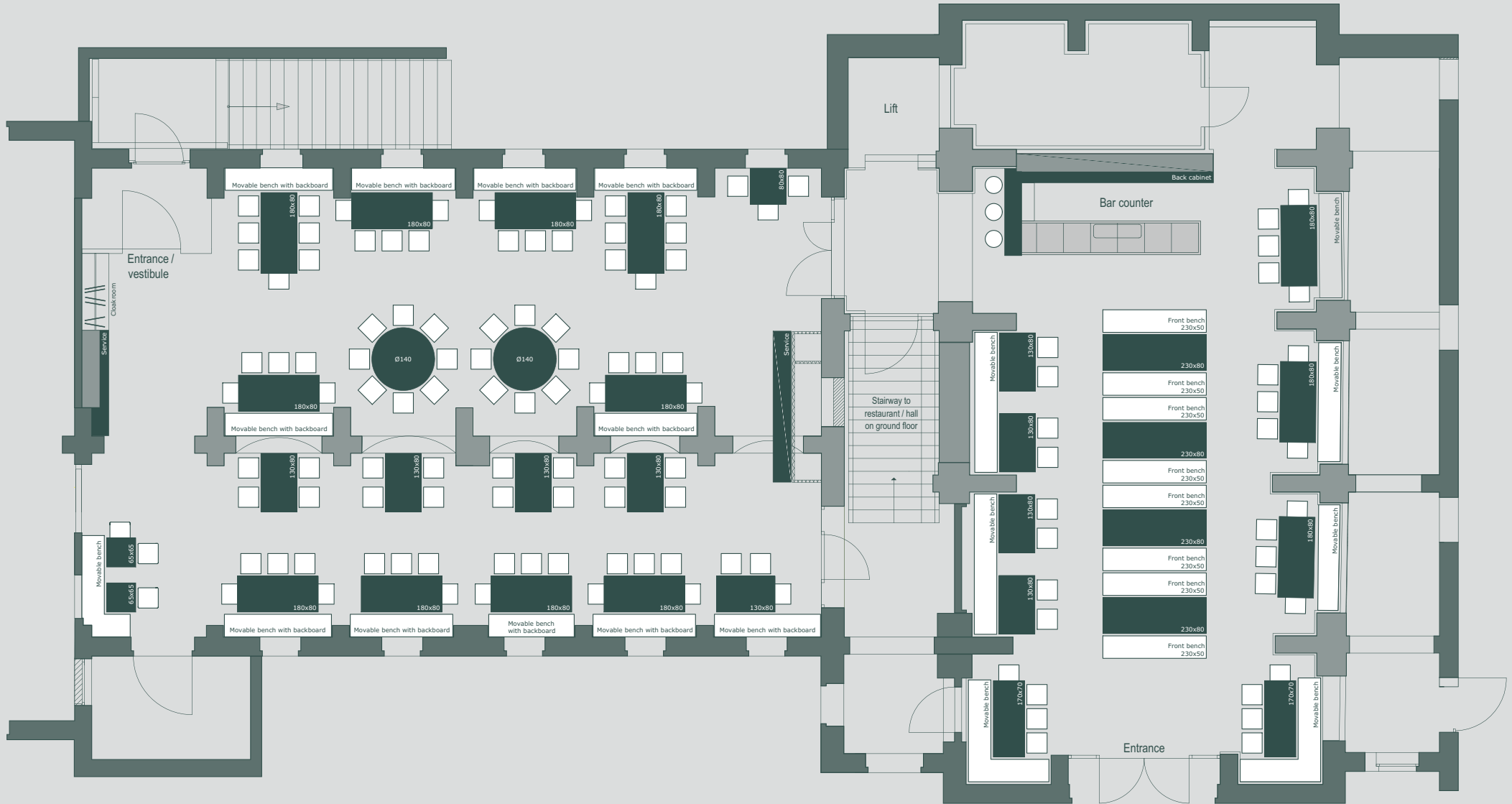
## TERRACES

Terrace 1 ( <i>restaurant side</i> ).....	80 PAX
Terrace 2 ( <i>Remise chancellery</i> ).....	60 PAX
Terrace 3 ( <i>Remise rail station</i> ).....	80 PAX

## SPACE

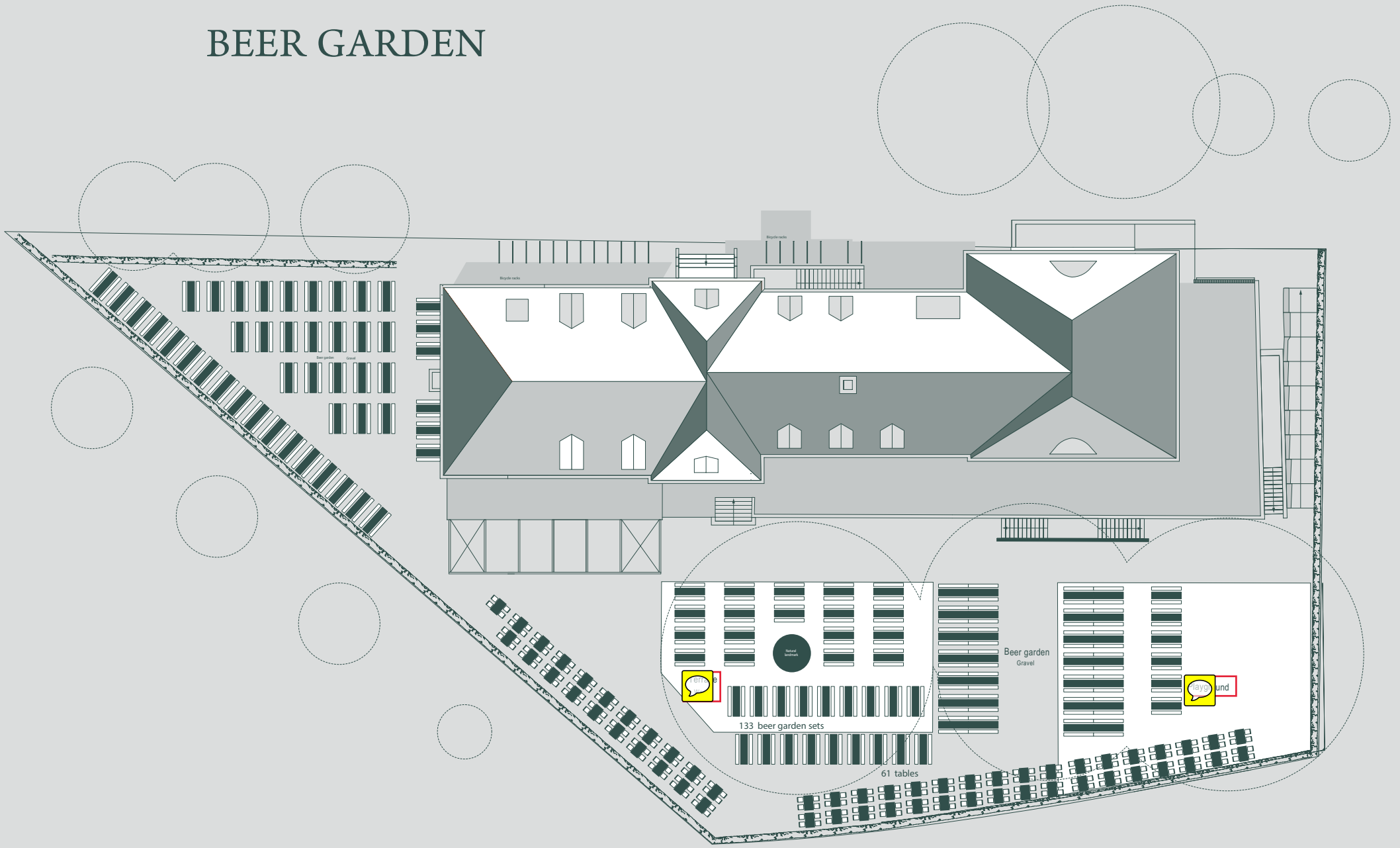
Restaurant.....	240 m <sup>2</sup>
Remise.....	170 m <sup>2</sup>
Tavern.....	125 m <sup>2</sup>
Schwemme.....	160 m <sup>2</sup>

# AUGUSTINER CELLAR



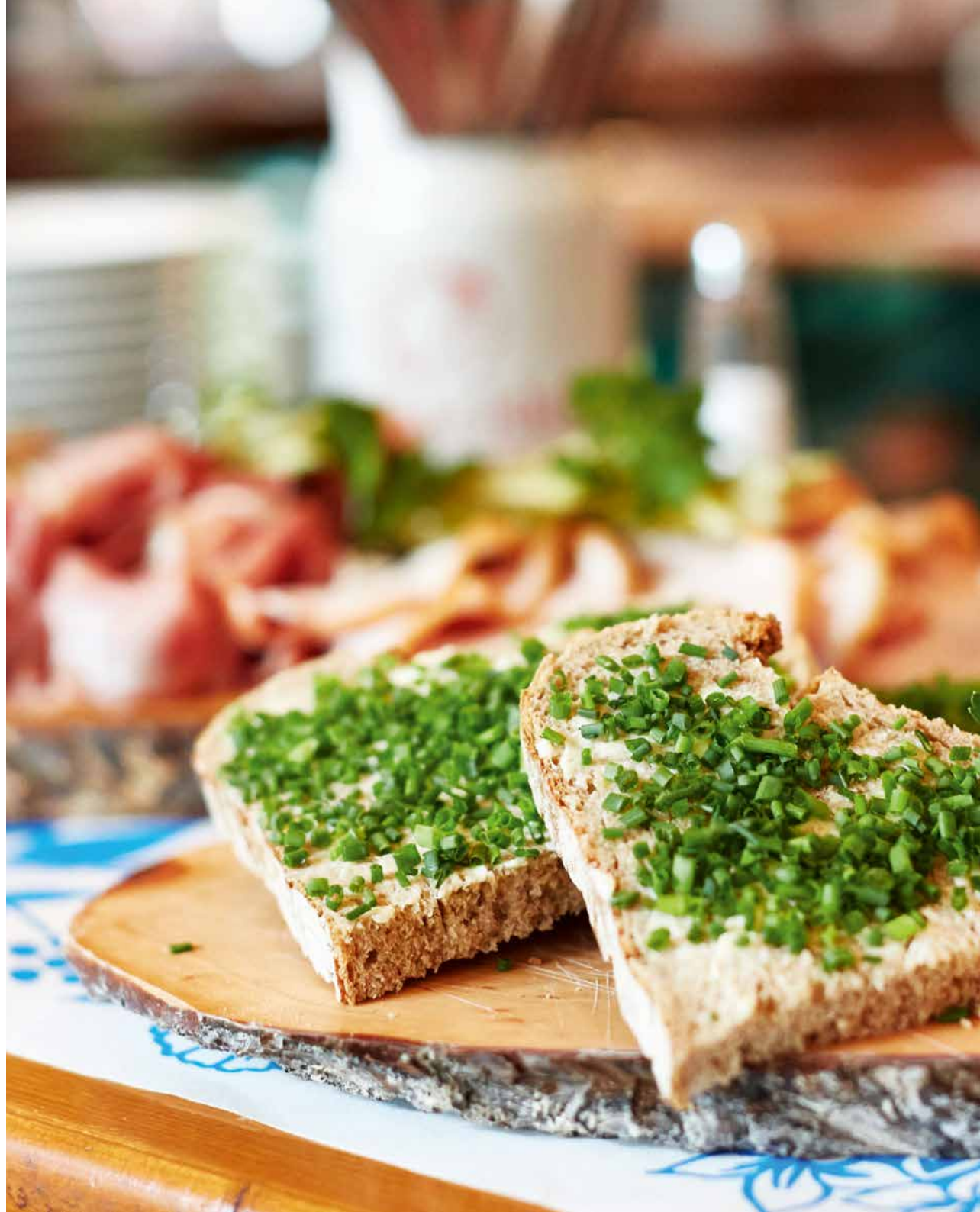


# BEER GARDEN



# MENU

For your creature comforts, we offer you a specially compiled menu for up to 100 people. We can recommend different buffet variations for groups of 60 people or more. Upon request, we are happy to compile a custom offer and can also consider vegetarian alternatives or allergies, provided that we are notified beforehand.





## EXCERPT BUFFET CLASSICS

### **BUFFET "ZOLLPACKHOF"**

Potato soup with sausages

\*\*\*

Homemade marinated salmon on Pumpernickel with cream cheese

Carpaccio of vine tomatoes with rocket salad and red onions

Fresh leaf lettuce of the season

\*\*\*

Grilled pike perch with potato leek ragout

Roasted pork with dark beer sauce,

Sauerkraut and sliced bread dumplings

Chicken Schnitzel "Vienna Style"

\*\*\*

Cut up and sugared pancakes with raisins and stewed plums

Apple and curd cheese Strudel with vanilla sauce

Bread and butter

### **BUFFET "GERMAN – AUSTRIAN STYLE"**

Soup of boiled fillet of beef with frittatas

\*\*\*

Marinated prime boiled beef salad

Homemade sausage salad

Smoked trout fillet with creamed cranberries

Lamb's lettuce with raspberry dressing

\*\*\*

Beef goulash with potato dumplings

Char fillet with ribbon noodles, cherry tomatoes and braised pointed cabbage

Finger noodles with pickled cabbage, grapes and walnuts

\*\*\*

Selection of Austrian cheese with grapes and nuts

Cut up and sugared pancakes with raisins and stewed plums



# EXCERPT A LA CARTE

## STARTERS

### **Homemade potato soup**

Homemade Obazda with freshly baked pretzels

### **Bavarian starter platter**

with Black Forest ham, sliced roast meat, liver sausage, Spreewald gherkins, radishes, horseradish, Alpine cheese, Obazda, chive quark, pretzel and house bread

## BAVARIAN TREATS

### **Pork roast with Augustiner dark beer sauce**

with Bavarian cabbage and potato dumplings

### **Crispy knuckle of pork fresh from the oven**

on Augustiner dark beer sauce with sauerkraut and bread dumplings

## ZOLLPACKHOF CLASSICS

### **Wiener Schnitzel**

with lemon and lingonberry jelly

### **Braised small ox cheeks**

with pan-cooked vegetables and mashed potatoes



# CONTACT AND DIRECTIONS

## ADDRESS

Zollpackhof  
Restaurant & Biergarten  
Elisabeth-Abegg-Str. 1  
10557 Berlin

T +49 30 330 997-20

F +49 30 330 997-15

mail@zollpackhof.de

www.zollpackhof.de

## HOURS OF OPERATION

### Restaurant:

Open every day from 10am to 10pm

### Augustiner Cellar:

Monday – Friday after 5 pm

Saturday after 1 pm

Sunday: closed

## WALKING DIRECTIONS

It's a 5-minute walk from the underground and S-Bahn rail station Berlin-Hauptbahnhof.

## STREET RAIL (S-BAHN)

S5, S7 and S75

Station: Berlin-Hauptbahnhof

## TRAM

M5, M8 and M10

Station: Berlin-Hauptbahnhof

## BUS

Bus TXL and 123

Station: Bundeskanzleramt

Bus 100

Station: Platz der Republik

Bus M85, M41, 120, 142, 147 and 245

Station: Berlin-Hauptbahnhof

## FERRY

Station: Paul-Löbe-Ufer

Station: Moltkebrücke



Invalidenstr.

K.-Jaschke-Str.

Kath.-Paulus-Str.

Ella-Trebe-Str.

Berlin-Hauptbahnhof

Alt-Moabit

Reinhardtstr.

Otto-v.-Bismarck-Allee

Paul-Löbe-Allee





[www.zollpackhof.de](http://www.zollpackhof.de)